

## Optional Items

265022680G(02)



Air Compressor



Blue Laser



Fume Extractor



Rotary Attachment



# GCC E200S Series Desktop Laser Engraver So Simple, So Professional

Model	E200S	E200SL
Work Area	510 x 330 mm (20 x 12.9 in.)	
Maximum Part Size (WxLxH)	520 x 340 x 20 mm (20.4 x 13.4 x 0.78 in.) (with grid cutting table) 505 x 340 x 76 mm (19.8 x 13.4 x 2.99 in.) (remove grid cutting table)	
CCD Camera	Standard, accurate within 0.16 in (4 mm)	
Working Table	Standard grid cutting table	
Dimensions	36 x 30.7 x 11.8 in. (915 x 780 x 300 mm)	
Laser Source	40W Sealed CO <sub>2</sub> Laser	
Drive	Closed-loop DC Servo Control	
Maximum Working Speed	20 IPS	
Maximum Cutting Thickness	10 mm	
Speed Control	Adjustable from 0.1~100% (Up to 5 color-linked speed settings per job)	
Power Control	Adjustable from 0~100% (Up to 5 color-linked power settings per job)	
DPI	Available 250,380,500,760,1000	
Focus Lens	Standard 1.5"	
Computer interface	Full-speed USB 2.0 port, 10 Base-T Ethernet	
Compatible Operating Systems	MS Windows (SmartJOB/Printer driver), Mac OS (SmartJOB)	MS Windows (Printer driver)
Control Panel	7" Touch screen	
Connection	WiFi, Ethernet, USB	Ethernet, USB
Water Chiller	Standard	
Air Compressor	Built-in, available for external high performance air compressor (option)	
Blue Laser	10W 450 nm (option)	
Safety	Class 1 Laser Product Complies with EN60825-1 Class 2 Laser Product Complies with CDRH Class 4 Laser Product Complies with Blue Laser (option)	
Facility Requirements		
Electrical	100-240VAC, 50-60Hz Auto Switching, Max. 15A	
Fume Extraction System	External exhaust system with minimum flow rate 300 m <sup>3</sup> /h (10594 ft <sup>3</sup> /h) is required, 2,500PA negative pressure (PURE-AIR PA-300 @ 4" exhaust port)	

\* Above specifications are subject to change without prior notice.



[www.GCCworld.com](http://www.GCCworld.com)



GCC Headquarters 4F-1., No.236, Fude 2nd Rd., Xizhi Dist., New Taipei City 22151, Taiwan 886-2-6616-6692 Fax : 886-2-2694-6875  
 GCC China No.1, Chen Feng Road, Yushan, Kunshan, Jiangsu 215300, China 86-512-5726-1515 Fax : 86-512-5726-1518  
 GCC Europe B.V. Eglantierbaan 43-45, 2908 LV, Capelle a/d IJssel, The Netherlands 31-10-458-9367  
 GCC America, Inc 20453 E Valley Blvd. Walnut, CA 91789, USA 1-909-718-0248 Fax : 1-909-718-0251  
 US & Canada Only Toll Free: 1-888-284-5211



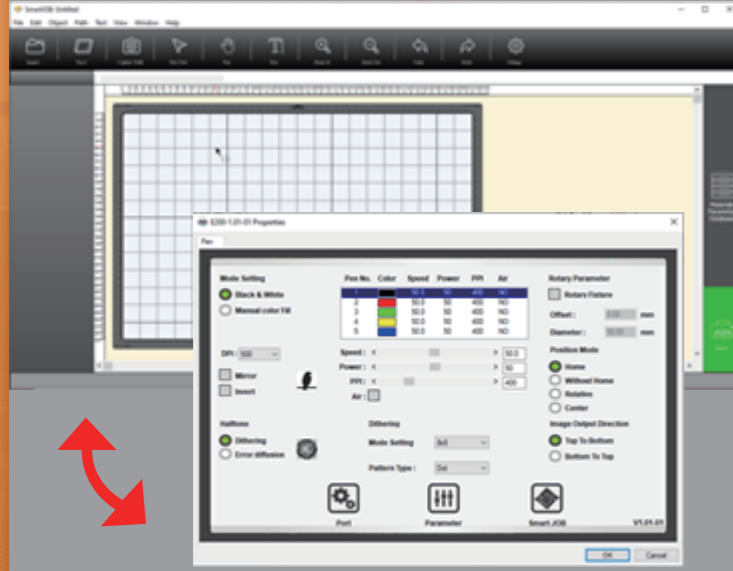
## E200S Series

- 510 x 330 mm Desktop Laser Engraver
- 7" Touch Screen Control Panel
- Stamp Mode with shoulder level function
- SmartEYES™ for live preview (E200S)
- Multifunction user interface for both beginners and advance users
- 20 IPS High Speed throughput
- Standard Water Chiller for high production

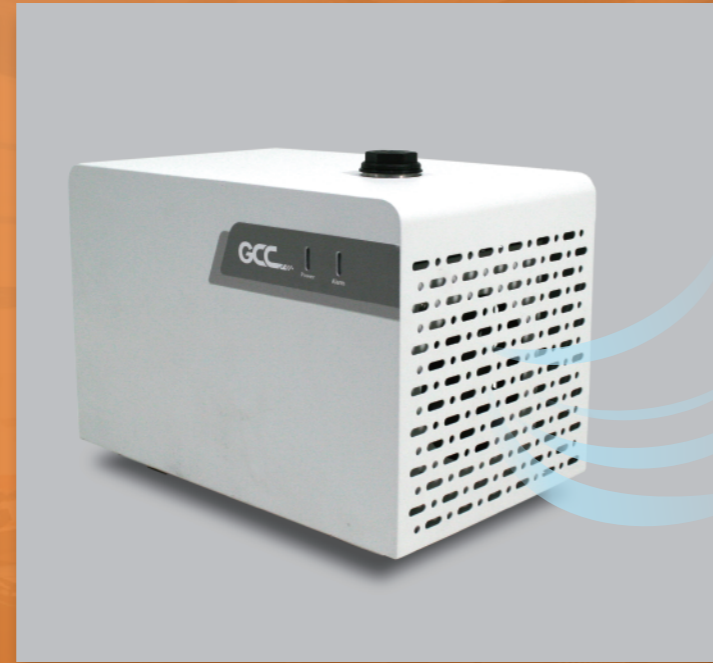
# Desktop Laser Engraver

## E200S Series

SmartJOB app for beginners.



GCC driver for advanced users.



### Simple but Professional

Multifunction user interface for both beginners and advance users. (SmartJOB is available in E200S only)

### Standard Water Chiller for Long-time Working

E200S Series desktop laser engraver comes with a standard water chiller to ensure machine efficiency.



### Unmatchable Output Quality

GCC E200S Series takes your engraving and cutting to a level beyond other desktop laser engravers.



### 7" Large Touch Panel

With colorful intuitive 7" touchscreen interface, E200S Series desktop laser engraver can bring your inspiration to life.

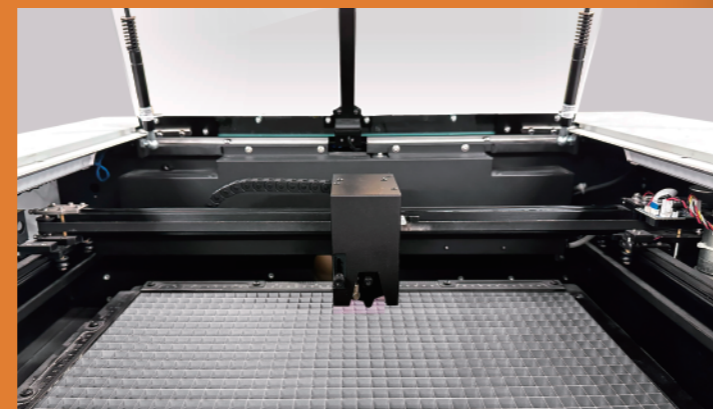
### Stamp Mode with Shoulder Level Function

The stamp mode with shoulder level function enables you to produce a professional stamp easily.



### SmartEYES™

E200S's on board camera allows you to preview your design to make positioning simple and easy. (E200S only)



### High Throughput for Unlimited Imagination

20ips Processing speed with DC servo motor to boost productivity while maintaining precision.

